

Specification

Model no.	Max. stroke (mm)	Main dimensions (mm)						Retainer dimensions (mm)					
		H	T	W	L	n*p	L1	L2	ØD	L3	B	P1	P2
GBV01-20	13	8.5	4	3.9	20	1*10	5	1.3	Ø1.5	15.5	5	1.75	3
GBV01-30	21				30	2*10				21.5	7		
GBV01-40	29				40	3*10				27.5	9		
GBV01-50	37				50	4*10				33.5	11		
GBV01-60	45				60	5*10				39.5	13		
GBV01-70	53				70	6*10				45.5	15		
GBV01-80	61				80	7*10				51.5	17		
GBV02-30	24	12	6	5.5	30	1*15	7.5	1.5	Ø2	20.6	5	2.3	4
GBV02-45	30				45	2*15				32.6	8		
GBV02-60	44				60	3*15				40.6	10		
GBV02-75	58				75	4*15				48.6	12		
GBV02-90	72				90	5*15				56.6	14		
GBV02-105	86				105	6*15				64.6	16		
GBV02-120	100				120	7*15				72.6	18		
GBV02-135	106				135	8*15				84.6	21		
GBV02-150	120				150	9*15				92.6	23		
GBV02-165	134				165	10*15				100.6	25		
GBV02-180	148				180	11*15				108.6	27		

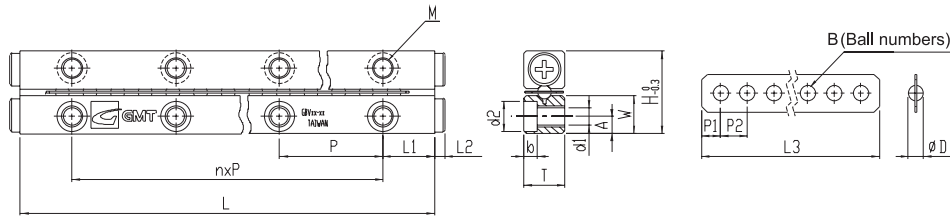
Ordering Example :	GB	V	01	40	P
	Ball	V rail	Ball dia.	Rail length	Precision Level



Material specification

Material Component	Rail	Ball bearing	Retainer
Material Model no.	GBV	SUJ2	Phosphor bronze (C5191)

Mounting dimensions (mm)					Load per ball bearing			Weight (g)/2 pieces
A	M	d1	d2	b	Basic dynamic load rating	Basic static load rating	Allowable Load	Standard
1.8	M2	1.65	3	1.4	7.6N/1pcs	21N/1pcs	7.0N/1pcs	4
								6
								8
								10
								12
								14
								16
2.5	M3	2.55	4.4	2	12N/1pcs	37N/1pcs	12.3N/1pcs	13
								20
								26
								32
								39
								45
								51
								58
								64
								70
								77



Specification

Model no.	Max. stroke (mm)	Main dimensions (mm)						Retainer dimensions (mm)					
		H	T	W	L	n*p	L1	L2	ØD	L3	B	P1	P2
GBV03-50	34	18	8	8.3	50	1*25	12.5	2	Ø3	35.7	7	2.86	5
GBV03-75	54				75	2*25				50.7	10		
GBV03-100	74				100	3*25				65.7	13		
GBV03-125	104				125	4*25				75.7	15		
GBV03-150	124				150	5*25				90.7	18		
GBV03-175	144				175	6*25				105.7	21		
GBV03-200	164				200	7*25				120.7	24		
GBV03-225	184				225	8*25				135.7	27		
GBV03-250	204				250	9*25				150.7	30		
GBV03-275	224				275	10*25				165.7	33		
GBV03-300	244				300	11*25				180.7	36		
GBV04-80	54				22	11				10	80		
GBV04-120	92	120	2*40	77.8			11						
GBV04-160	130	160	3*40	98.8			14						
GBV04-200	154	200	4*40	126.8			18						
GBV04-240	192	240	5*40	147.8			21						
GBV04-280	230	280	6*40	168.8			24						
GBV04-320	254	320	7*40	196.8			28						
GBV04-360	292	360	8*40	217.8			31						
GBV04-400	330	400	9*40	238.8			34						
GBV04-440	354	440	10*40	266.8			38						
GBV04-480	392	480	11*40	287.8			41						

Ordering Example :

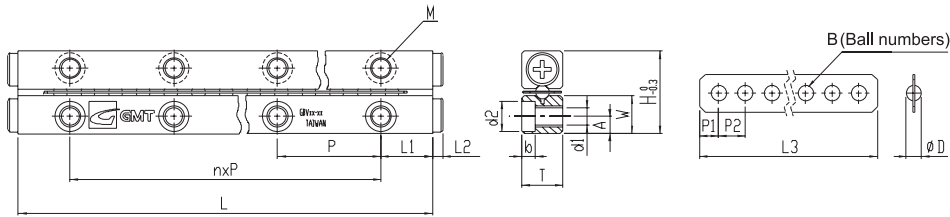
GB	V	03	75	P
Ball	V rail	Ball dia.	Rail length	Precision Level



Material specification

Material Component Model no.	Rail	Ball bearing	Retainer
GBV		SUJ2	Phosphor bronze (C5191)

Mounting dimensions (mm)					Load per ball bearing			Weight (g)/2 pieces
A	M	d1	d2	b	Basic dynamic load rating	Basic static load rating	Allowable Load	Standard
3.5	M4	3.3	6	3.1	26.5N/1pcs	84N/1pcs	28N/1pcs	46
								68
								90
								112
								134
								156
								178
								200
								222
								244
								266
								4.5
179								
237								
295								
353								
411								
470								
528								
586								
645								
703								



Specification

Model no.	Max. stroke (mm)	Main dimensions (mm)						Retainer dimensions (mm)					
		H	T	W	L	n*p	L1	L2	ØD	L3	B	P1	P2
GBV06-100	80	31	15	14	100	1*50	25	2	6	63.6	7	4.8	9
GBV06-150	108				150	2*50				99.6	11		
GBV06-200	154				200	3*50				126.6	14		
GBV06-250	200				250	4*50				153.6	17		
GBV06-300	246				300	5*50				180.6	20		
GBV06-350	274				350	6*50				216.6	24		
GBV06-400	320				400	7*50				243.6	27		
GBV06-450	366				450	8*50				270.6	30		
GBV06-500	412				500	9*50				297.6	33		
GBV06-550	458				550	10*50				324.6	36		
GBV06-600	486	600	11*50	360.6	40								

Ordering Example :	GB	V	06	200	P
	Ball	V rail	Ball dia.	Rail length	Precision Level



Material specification

Material Component Model no.	Rail	Ball bearing	Retainer
GBV	SUJ2		Phosphor bronze (C5191)

Mounting dimensions (mm)					Load per ball bearing			Weight (g)/2 pieces
A	M	d1	d2	b	Basic dynamic load rating	Basic static load rating	Allowable Load	Standard
6	M6	5.3	9.5	5.2	92N/1pcs	330N/1pcs	110N/1pcs	287
								429
								571
								712
								852
								993
								1135
								1275
								1417
								1558
								1250