

Specification

Model no.	Max. stroke (mm)	Main dimensions (mm)							Retainer dimensions (mm)				
		H	T	W	L	n*p	L1	L2	ØD	L3	R	P1	P2
GRVP01-20	13	8.5	4	3.9	20	1*10	5	1.3	Ø1.5	15.8	5	1.9	3
GRVP01-30	21				30	2*10				21.8	7		
GRVP01-40	29				40	3*10				27.8	9		
GRVP01-50	37				50	4*10				33.8	11		
GRVP01-60	45				60	5*10				39.8	13		
GRVP01-70	53				70	6*10				45.8	15		
GRVP01-80	61				80	7*10				51.8	17		
GRVP02-30	24	12	6	5.5	30	1*15	7.5	1.5	Ø2	19.5	5	2.8	4
GRVP02-45	30				45	2*15				30.5	8		
GRVP02-60	44				60	3*15				38.5	10		
GRVP02-75	58				75	4*15				46	12		
GRVP02-90	72				90	5*15				54	14		
GRVP02-105	86				105	6*15				61.5	16		
GRVP02-120	100				120	7*15				68.7	18		
GRVP02-135	106				135	8*15				80.5	21		
GRVP02-150	120				150	9*15				83	23		
GRVP02-165	134				165	10*15				95.5	25		
GRVP02-180	148	180	11*15	103	27								
GRVP03-50	34	18	8	8.3	50	1*25	12.5	2	Ø3	36.4	7	3.2	5
GRVP03-75	54				75	2*25				51.4	10		
GRVP03-100	74				100	3*25				66.4	13		
GRVP03-125	104				125	4*25				76.4	15		
GRVP03-150	124				150	5*25				91.4	18		
GRVP03-175	144				175	6*25				106.4	21		
GRVP03-200	164				200	7*25				121.4	24		
GRVP03-225	184				225	8*25				136.4	27		
GRVP03-250	204				250	9*25				151.4	30		
GRVP03-275	224				275	10*25				166.4	33		
GRVP03-300	244				300	11*25				181.4	36		

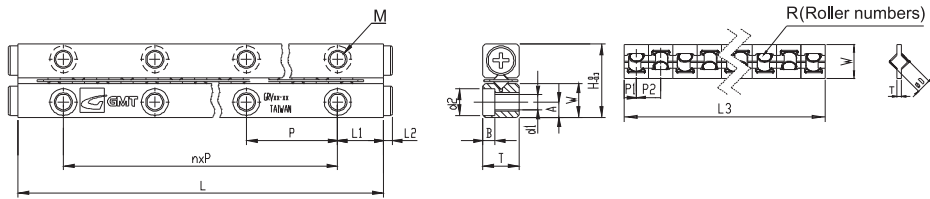
Ordering Example :	GR	V	P	06	100	P
	Roller	V rail	POM Retainer	Roller dia.	Rail length	Precision Level



Material specification

Material Component Model no.	Rail	Roller	Retainer
GRVP	SUJ2		POM

Mounting dimensions (mm)					Load per roller			Weight (g)/2 pieces
A	M	d1	d2	B	Basic dynamic load rating	Basic static load rating	Allowable Load	Standard
1.8	M2	1.65	3	1.4	125N/1pcs	144N/1pcs	48N/1pcs	4.0
								6.0
								8.0
								10.0
								12.0
								14.0
								16.0
2.5	M3	2.55	4.4	2	293N/1pcs	292N/1pcs	97N/1pcs	13.0
								20.0
								26.0
								32.0
								39.0
								45.0
								51.0
58.0								
64.0								
70.0								
77.0								
3.5	M4	3.3	6	3.1	638N/1pcs	761N/1pcs	254N/1pcs	46.0
								68.0
								90.0
								112.0
								134.0
								157.0
								179.0
201.0								
223.0								
245.0								
267.0								



Specification

Model no.	Max. stroke (mm)	Main dimensions (mm)						Retainer dimensions (mm)					
		Standard	H	T	W	L	n*p	L1	L2	ØD	L3	R	P1
GRVP04-80	54				80	1*40				57.6	8		
GRVP04-120	92				120	2*40				78.6	11		
GRVP04-160	130				160	3*40				99.6	14		
GRVP04-200	154				200	4*40				127.6	18		
GRVP04-240	192				240	5*40				148.6	21		
GRVP04-280	230	21	11	10	280	6*40	20	2	Ø4	169.6	24	4.3	7
GRVP04-320	254				320	7*40				197.6	28		
GRVP04-360	292				360	8*40				218.6	31		
GRVP04-400	330				400	9*40				239.6	34		
GRVP04-440	354				440	10*40				267.6	38		
GRVP04-480	392				480	11*40				288.6	41		
GRVP06-100	80				100	1*50				64.8	7		
GRVP06-150	108				150	2*50				100.8	11		
GRVP06-200	154				200	3*50				127.8	14		
GRVP06-250	200				250	4*50				154.8	17		
GRVP06-300	246				300	5*50				181.8	20		
GRVP06-350	274	31	15	14	350	6*50	25	2	Ø6	217.8	24	5.4	9
GRVP06-400	320				400	7*50				244.8	27		
GRVP06-450	366				450	8*50				272.5	30		
GRVP06-500	412				500	9*50				300	33		
GRVP06-550	458				550	10*50				326.5	36		
GRVP06-600	486				600	11*50				364	40		

Ordering Example :

GR	V	P	06	100	P
Roller	V rail	POM Retainer	Roller dia.	Rail length	Precision Level



Material specification

Material Component Model no.	Rail	Roller	Retainer
GRVP	SUJ2		POM

Mounting dimensions (mm)					Load per roller			Weight (g)/2 pieces
A	M	d1	d2	B	Basic dynamic load rating	Basic static load rating	Allowable Load	Standard
4.5	M5	4.3	7.5	4.1	1230N/1pcs	1170N/1pcs	390N/1pcs	122
								180
								238
								296
								355
								413
								472
								530
								589
								647
706								
6	M6	5.3	9.5	5.2	2570N/1pcs	2632N/1pcs	877N/1pcs	287
								435
								577
								721
								864
								1006
								1150
								1292
								1436
								1579
1273								